

## Out-of-work Claimants

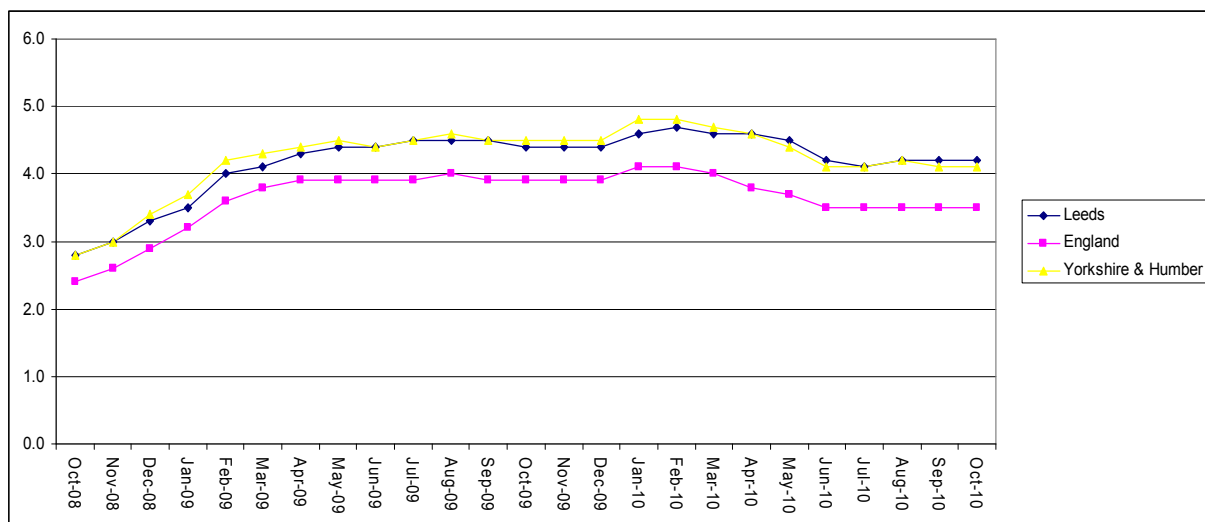
### Summary report October 2010

This summary covers the Job Seeker Allowance (JSA) monthly claimant data for October 2010 and the Working Age Client Group data (i.e. out-of-work benefit claimants) for May 2010.

#### Jobseeker Allowance (JSA) - October 2010

- The October 2010 JSA claimant rate in Leeds is 4.2%. This is a decrease of -0.6% on the previous month and of -5.2% on the previous year.
- The JSA claimant rate in Leeds is 4.2%, this compares favourably with the region (4.1%) and is higher than the England rate of 3.5%.
- Leeds has experienced a smaller percentage decrease in the number of JSA claimants over the last year compared to the region and to England.
- Over the last two years the JSA claimant rate has consistently been higher than the rate for England and has followed closely the rate for the region.

#### JSA claimant rates from October 2008 to 2010 for Leeds, Yorkshire & Humber Region, and England.



- In comparison with Core Cities, only Bristol and Sheffield have a lower JSA rate than Leeds.
- 54% of JSA claimants have been claiming JSA for longer than 13 weeks.
- 57% of JSA claimants in Leeds are aged between 25 and 49, with 29% aged between 18 and 24. Those aged 50 and above account for 13% and 0.1% are aged under 18.
- 6,491 people in Leeds left the JSA register in October 2010 (an increase of 38% on the previous month) and 6,245 joined the register (an increase of 36% on the previous month).

## Appendix 3

- The Lower Super Output Areas (LSOAs) with the highest out-of-work claimant rates are in descending order: Granges, Hamiltons, Francis Street (20.9%), Spencer Place, Bankside St, Shepherds Lane (15.2%), and Lincoln Green (14.9%).

### LSOAs with the highest JSA claimant rates.

LSOA Name	Ward	Total claimants	Rate
Granges, Hamiltons, Francis Street	Chapel Allerton	226	20.89%
Spencer Place, Bankside St, Shepherds Lane	Gipton & Harehills	155	15.23%
Lincoln Green	Burmantofts & Richmond Hill	258	14.87%
Scott Hall Road, Sholebrokes	Chapel Allerton	154	14.37%
Wickham St. Seftons, Harlechs	City & Hunslet	180	13.44%
East Park Drive, Glensdales, Raincliffes	Burmantofts & Richmond Hill	132	13.37%
Haselwoods, Rigtons	Burmantofts & Richmond Hill	136	13.27%
Gathorne Terr, Hares Ave, Pasture Road, Baldovan Mt	Gipton & Harehills	118	13.15%
Bismarcks, Dewsbury Road, Burton St	City & Hunslet	107	12.36%
Trentham St, Oakleys, Garnets	City & Hunslet	154	12.28%

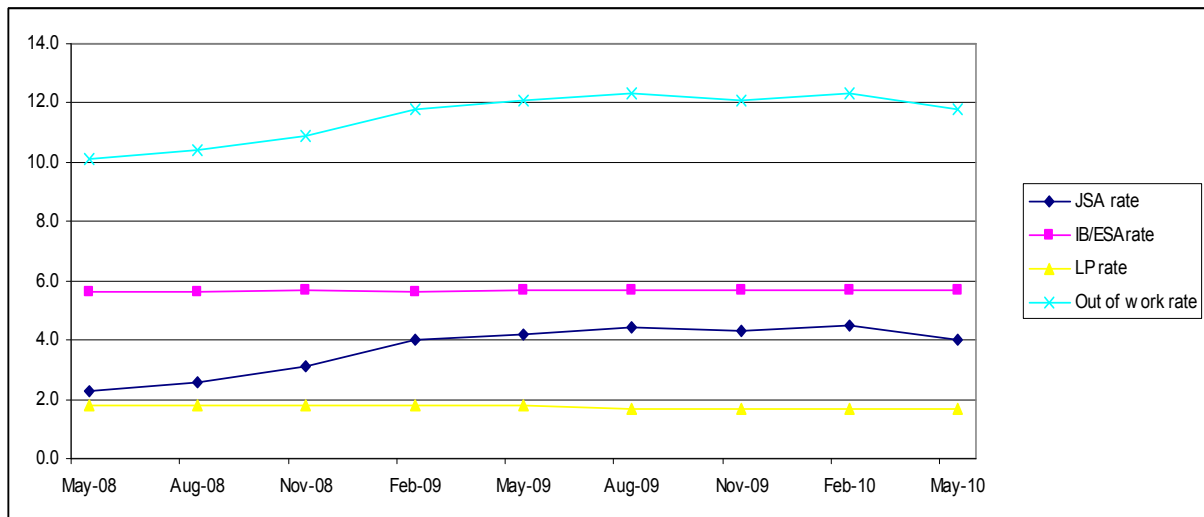
### Vacancies and positions sought – October 2010

- In October 2010, there were 6,708 notified vacancies in Leeds, this is an increase of 2,206 (49%) on the previous year (September data is not available for a monthly comparison).
- Heavy goods vehicle drivers, care assistants and home carers, and sales assistants were the most common vacancies advertised in Leeds job centres in October 2010. The most common sought after occupations were sales and retail assistant, other goods handling and storage occupations and general officer assistants/clerks.

## Out-of-work claimants – May 2010

The most current data on out-of-work benefit claimants shows that there were 64,290 claimants in Leeds in May 2010. This represents 11.8% of the city's working age population, 48% of claimants are on Incapacity Benefit or Employment Support Allowance (IB/ESA), 34% are on Job Seekers Allowance (JSA), and 14% are Lone Parents in receipt of Income Support (LP). This leaves 4% who are claiming 'other' benefits.

### Out-of-work claimant rates in Leeds May 2008 to 2010



- Over the last 2 years, JSA claimant rates have increased more than the other main claimant types. There has been very little change in the rate of IB/ESA and LP claimants over the same period.
- The out-of-work claimant rate for Leeds increased from 10.1% in May 08 to a peak of 12.3% in August 09 and February 10. There was a slight drop in the most recent quarter to a rate of 11.8%.
- 59% of out-of-work claimants have been claiming these benefits for over a year.
- Over the last year Leeds has had the lowest overall out-of-work claimant rate of all the core cities.
- The May 2010 out-of-work claimant rate for Leeds is slightly below the rate for England – 11.8% compared to 12.0%.

**LSOAs with the highest out-of-work claimant rates.**

<b>LSOA Name</b>	<b>Ward</b>	<b>Count</b>	<b>Rate</b>
Granges, Hamiltons, Francis Street	Chapel Allerton	515	47.60%
Cross Green Lane, Easy Road, Dial St, Dent St	Burmantofts & Richmond Hill	370	38.66%
Scott Hall Road, Sholebrokes	Chapel Allerton	390	36.38%
Haselwoods, Rigtons	Burmantofts & Richmond Hill	365	35.61%
Thwaite Gate	City & Hunslet	325	34.28%
Winroses, Whitebeams	Middleton Park	345	33.69%
Tarnside Drive, Foundry Mill Street, South Parkway	Killingbeck & Seacroft	225	33.38%
Foundrys, Thorn Drive, North Farm Road, Amberton Approach	Gipton & Harehills	320	32.92%
Bismarcks, Dewsbury Road, Burton St	City & Hunslet	285	32.91%
Foundry Mill Drive, Hawkshead Cres, Alston Lane	Killingbeck & Seacroft	310	32.70%
Spencer Place, Bankside St, Shepherds Lane	Gipton & Harehills	330	32.42%

**Incapacity Benefit / Employment Support Allowance (IB/ESA) – May 2010**

- In May 2010 there were 31,070 IB/ESA claimants in Leeds, this accounts for 5.7% of the working age population.
- The number of IB/ESA claimants showed a slight quarterly increase in May 2010 by just under 0.2% and an increase of 1.2% on the previous year.
- The May 2010 IB/ESA rate for Leeds is slightly below the rate for England – 5.7% compared to 6.3%.
- In comparison to the other core cities in May 2010, Leeds had the lowest claimant rate for IB/ESA.
- 84% of IB/ESA claimants have been claiming this benefit for over a year.

**LSOAs with the highest IB/ESA claimant rates.**

<b>LSOA name</b>	<b>Ward</b>	<b>IB count</b>	<b>IB rate</b>
Eastdeans, Seacroft Cres, Hansbys	Killingbeck & Seacroft	165	19.16%
Cross Green Lane, Easy Road, Dial St, Dent St	Burmantofts & Richmond Hill	170	17.76%
Granges, Hamiltons, Francis Street	Chapel Allerton	190	17.56%
Thwaite Gate	City & Hunslet	165	17.41%
Bismarcks, Dewsbury Road, Burton St	City & Hunslet	150	17.32%
Kentmere Ave, North Parkway, Easdale Cres	Killingbeck & Seacroft	165	17.05%
Stonegate Road, Queenshills, Fieldhouse Drive & Close	Moortown	140	15.93%
Glenthorpes / Gargrave Place / Brignall Garth / Middleton Ave	Burmantofts & Richmond Hill	180	15.82%
Millshaw, Elland Rd, Cottingley Approach	Beeston & Holbeck	175	15.53%
Scott Hall Road, Sholebrokes	Killingbeck & Seacroft	165	15.39%

**Lone Parents (LP) – May 2010**

- In May 2010 there were 9,050 LP claimants in Leeds, this accounts for 1.7% of the working age population.
- The number of LP claimants showed a slight quarterly decrease in May 2010 by -0.2% and a decrease of -4.8% on the previous year.
- The May 2010 LP rate for Leeds is slightly below the rate for England – 1.7% compared to 1.8%.
- In comparison to the other core cities in May 2010, Leeds and Sheffield both had the lowest claimant rates for LP.
- 74% of LP claimants have been claiming this benefit for over a year.

**LSOAs with the highest LP claimant rates.**

<b>LSOA Name</b>	<b>Ward</b>	<b>LP Count</b>	<b>LP Rate</b>
Tarnside Drive, Foundry Mill Street, South Parkway	Killingbeck & Seacroft	65	9.64%
Foundry Mill Drive, Hawkshead Cres, Alston Lane	Killingbeck & Seacroft	90	9.49%
Winroses, Whitebeams	Middleton Park	95	9.28%
Halton Moor, Kendal Drive, Cartmell Drive	Temple Newsam	80	7.68%
Brander Road, South Farms, Coldcotes	Gipton & Harehills	70	7.58%
Granges, Hamiltons, Francis Street	Chapel Allerton	80	7.39%
Neville Road, Wykebecks	Temple Newsam	75	7.18%
Boggart Hill	Killingbeck & Seacroft	60	6.73%
Scott Hall Road, Sholebrokes	Chapel Allerton	70	6.53%
Middleton Park Grove, Acre Road, Throstle Lane	Middleton Park	70	6.51%